

# Installation Instruction Mounting Pole

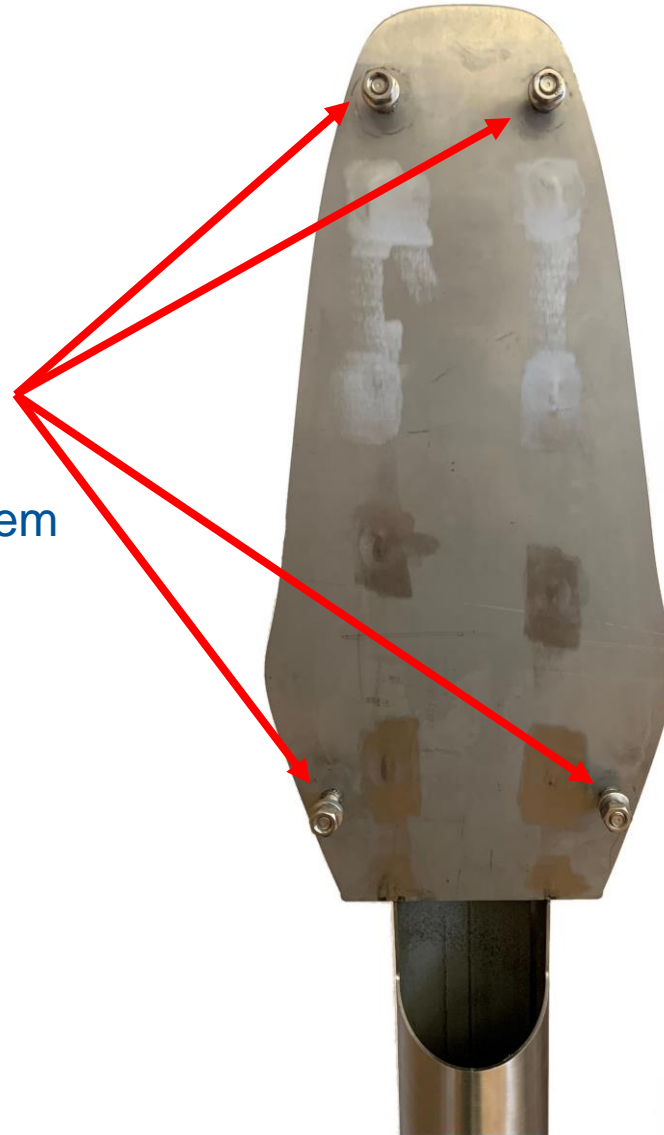
1

# INSTALLATION INSTRUCTION - MOUNTING POLE

Mounting Pole Front View

Side View

- When unboxing the mounting pole, make sure that there are the corresponding M8 nuts and sealing washers on all bolts (4x). Remove them and keep them for later.

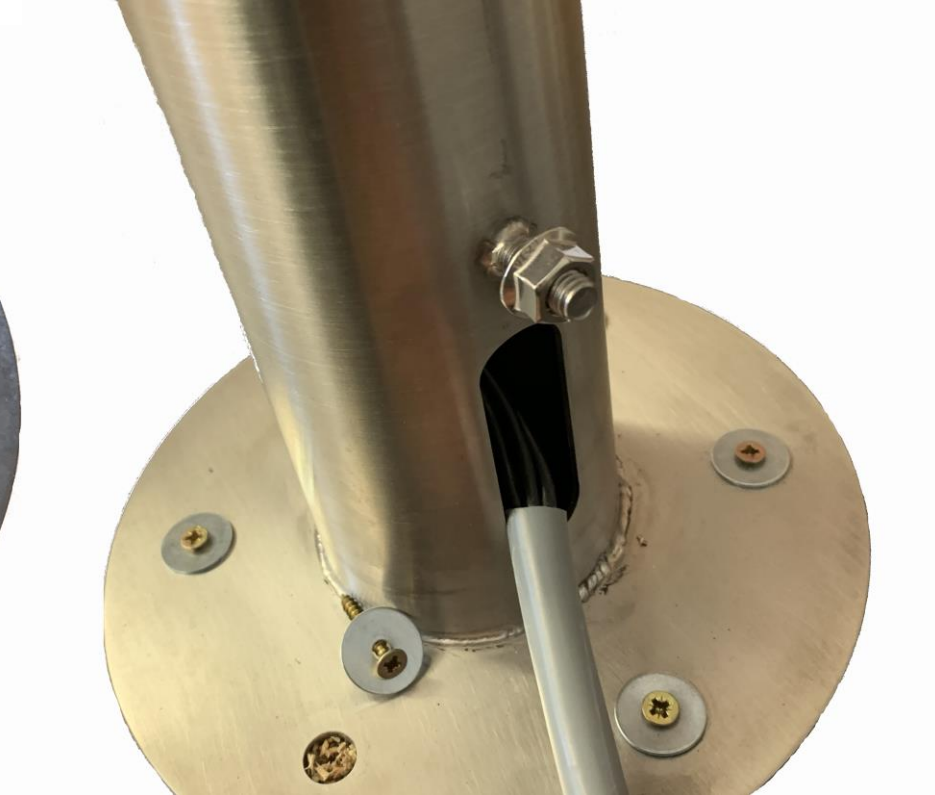
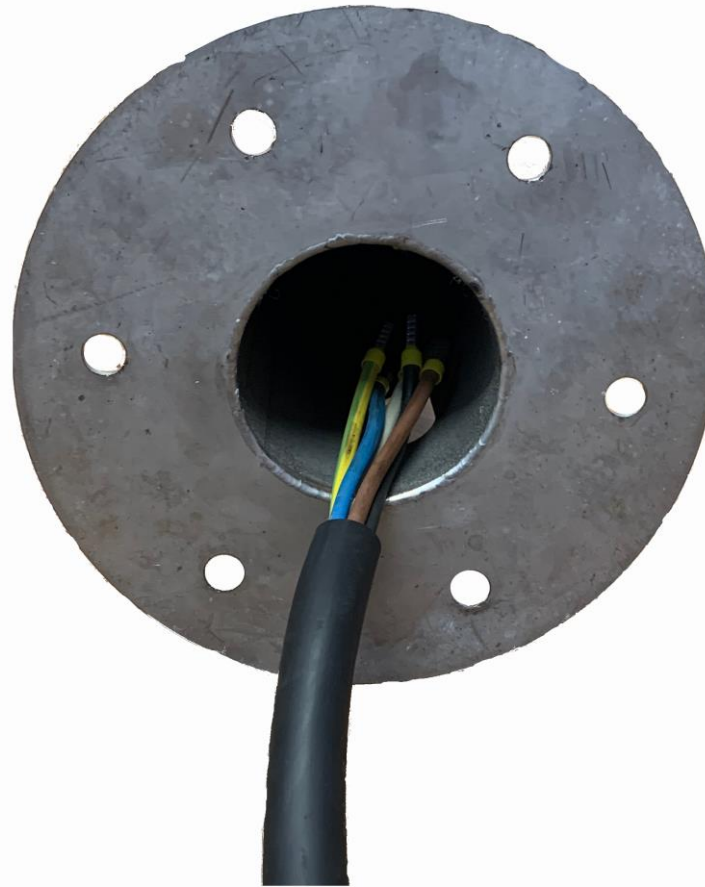


# INSTALLATION INSTRUCTION - CABLE ENTRY

Cable entry from below

Cable entry from rear

- Use the openings to insert the power line in the mounting pole from below or from rear



## INSTALLATION INSTRUCTION - EQUIPOTENTIAL BONDING CONNECTION

- Connect the bonding conductor to the bonding pin at the rear of the mounting pole. Use a lug for M8 bolts for the connection.

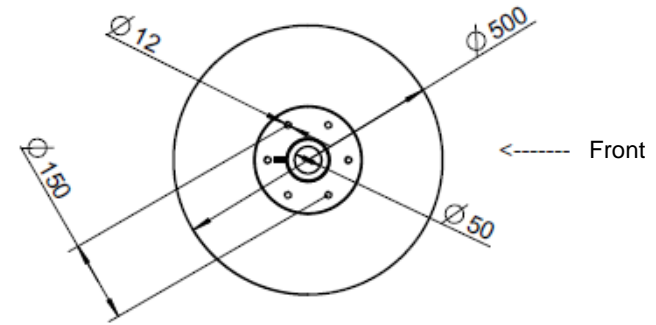
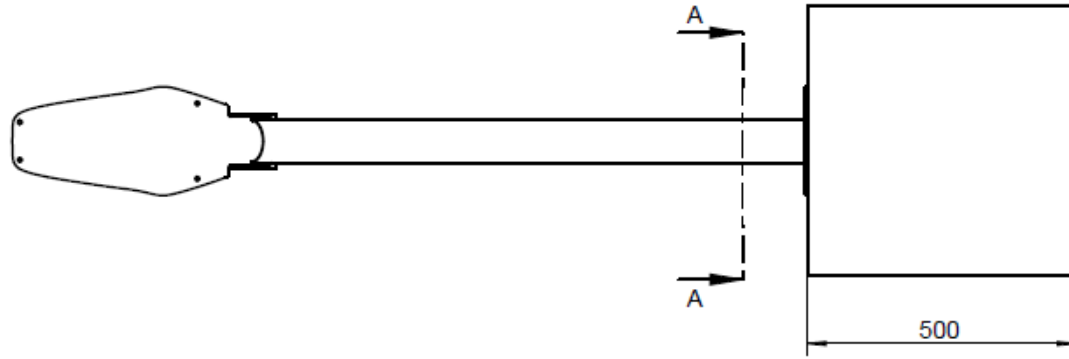


## INSTALLATION INSTRUCTION - CABLE RUN

- Pass the power line through the mounting pole until it comes out at the top end of the pole. Make sure the line is long enough for comfortable connection during the following CION installation.

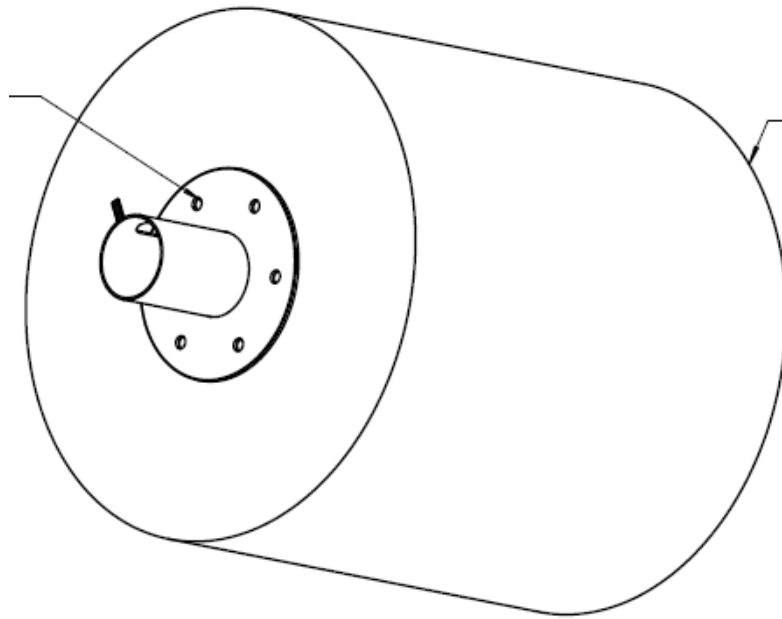


# INSTALLATION INSTRUCTION - FOUNDATION DRAWING



SECTION A-A

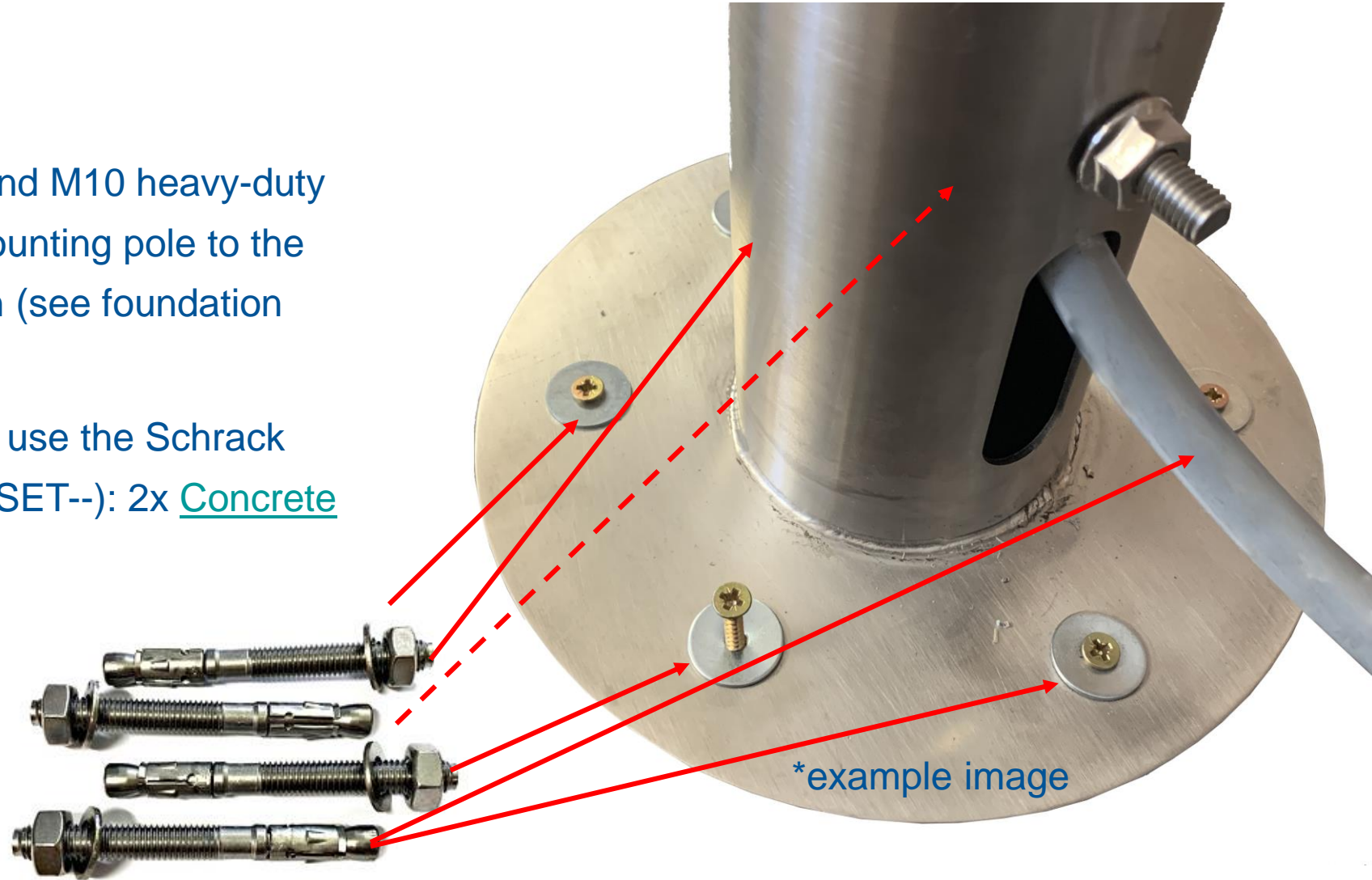
Mounting drill holes dia. 12 mm for M10 heavy-duty anchor A4  
Bolt circle 150 mm  
Oriented as shown in drawing



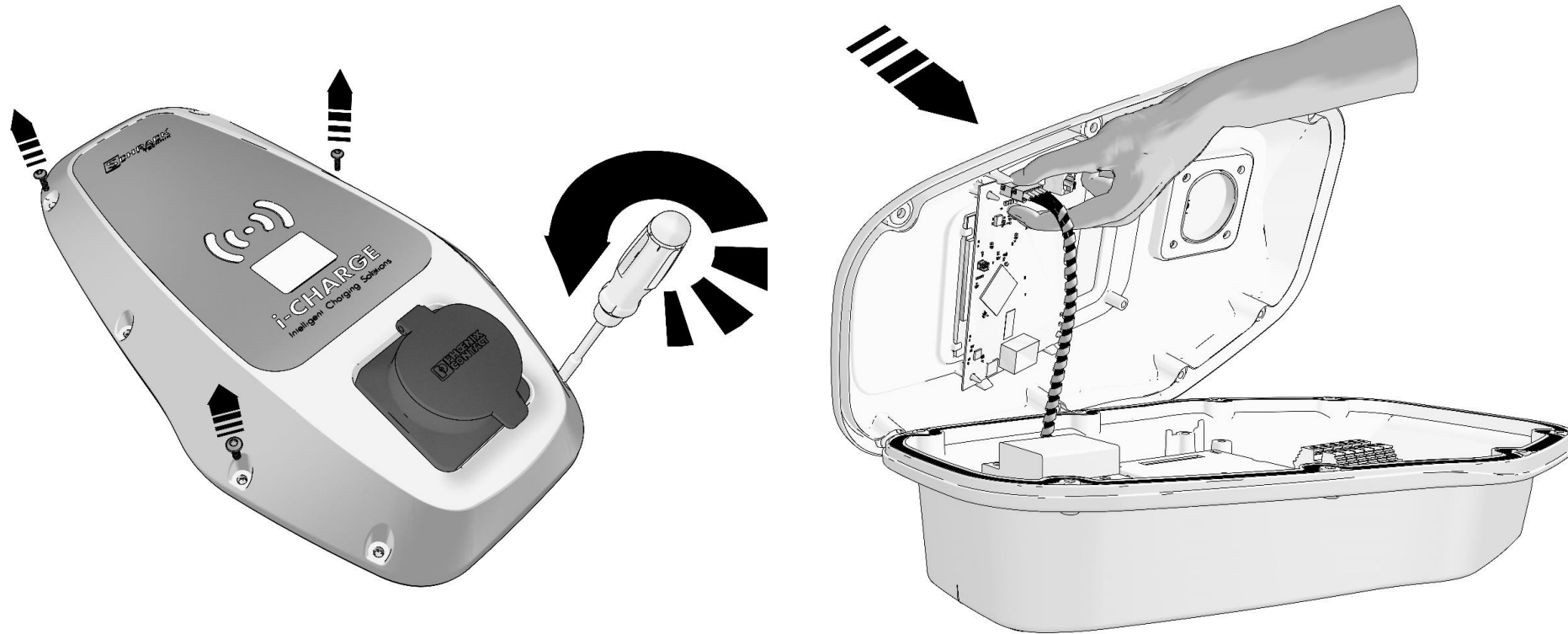
Foundation  
Concrete according to DIN 1045-1: C30/37 XC2/XF2  
Foundation neatly levelled  
Foundation on frost-proof substructure  
Reinforcement as required

## INSTALLATION INSTRUCTION - MOUNTING ON FOUNDATION (EXAMPLE)

- Use the 6 drill holes and M10 heavy-duty anchors to bolt the mounting pole to the designated foundation (see foundation drawing)
- For example, you can use the Schrack mounting kit (EMPUBSET--): 2x [Concrete Impact Anchor M10](#)

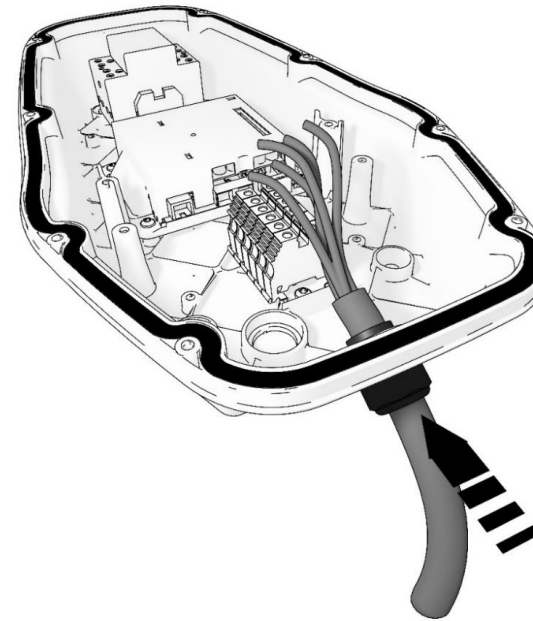
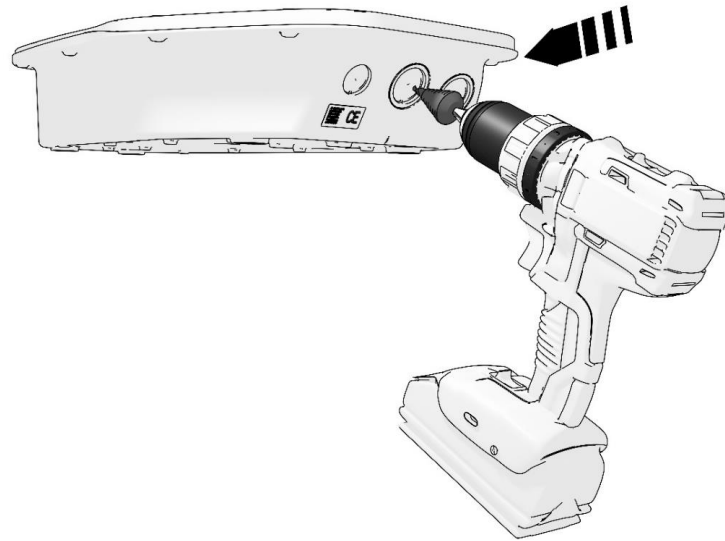


# INSTALLATION INSTRUCTION - PREPARE CION



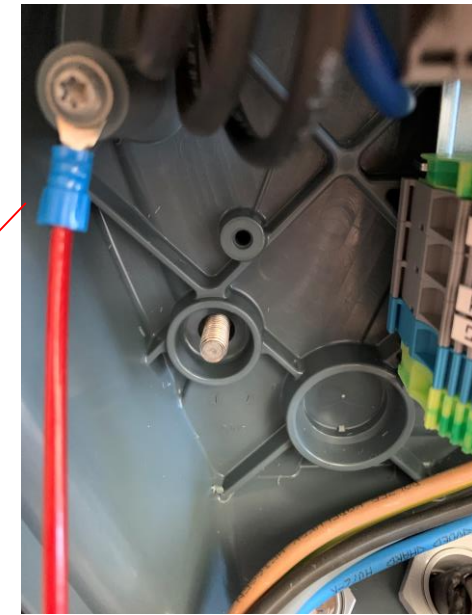
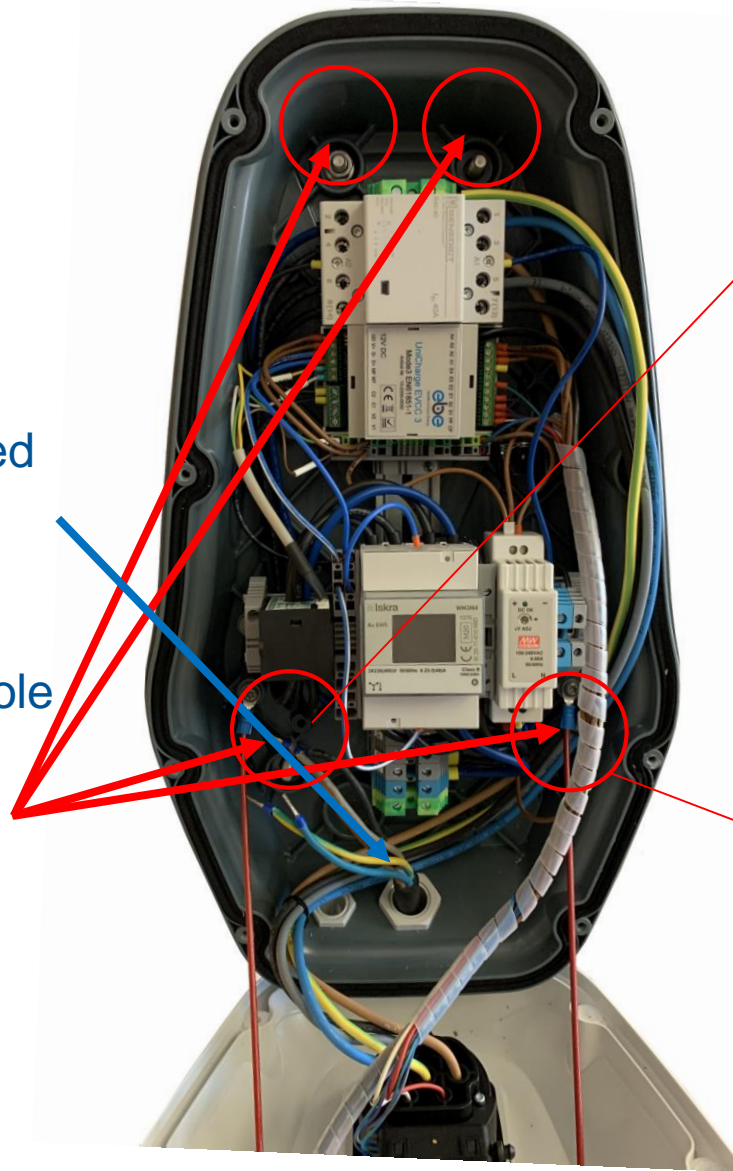


# INSTALLATION INSTRUCTION - PREPARE CION



## INSTALLATION INSTRUCTION - MOUNTING POLE

- Insert the power line through the central pre-drilled cable gland and fasten it on the inside in the required length.
- Then attach the CION to the installation plate of the mounting pole using the 4 bolts provided.



## INSTALLATION INSTRUCTION - ATTACH SEALING WASHERS

- Slip the 4 sealing washers included in the delivery over the mounting bolts. They are essential for maintaining the ingress protection rating of the charging station. You can use a size 13 mm socket nut to push the washers over the bolts. You will get quite some resistance, which is necessary to ensure proper sealing.



## INSTALLATION INSTRUCTION - ATTACH M8 NUTS

- Use the size 13 mm socket nut to attach the M8 nuts included in the delivery.
- Do not exceed a torque of 4.0 Nm.



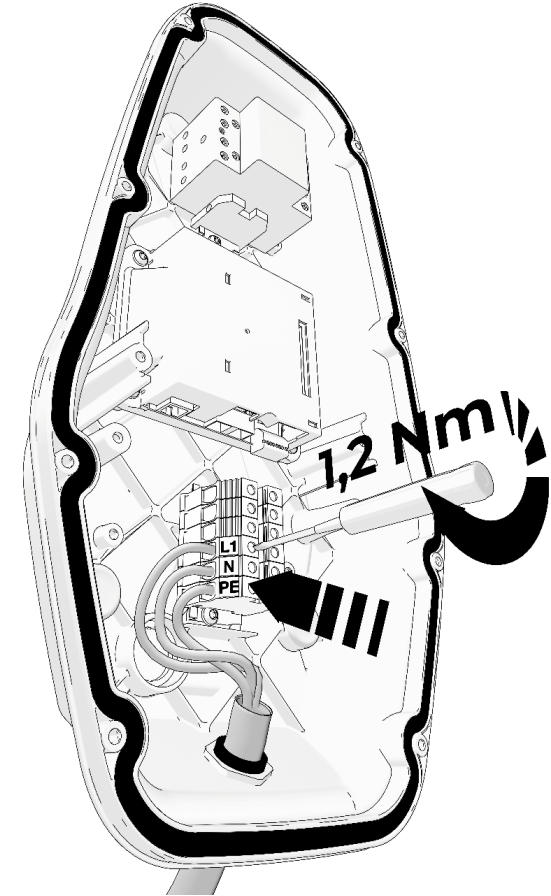
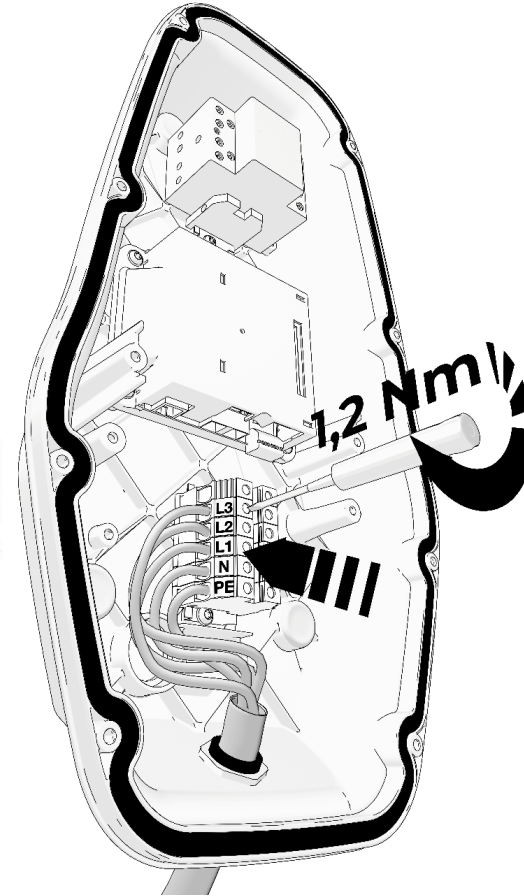
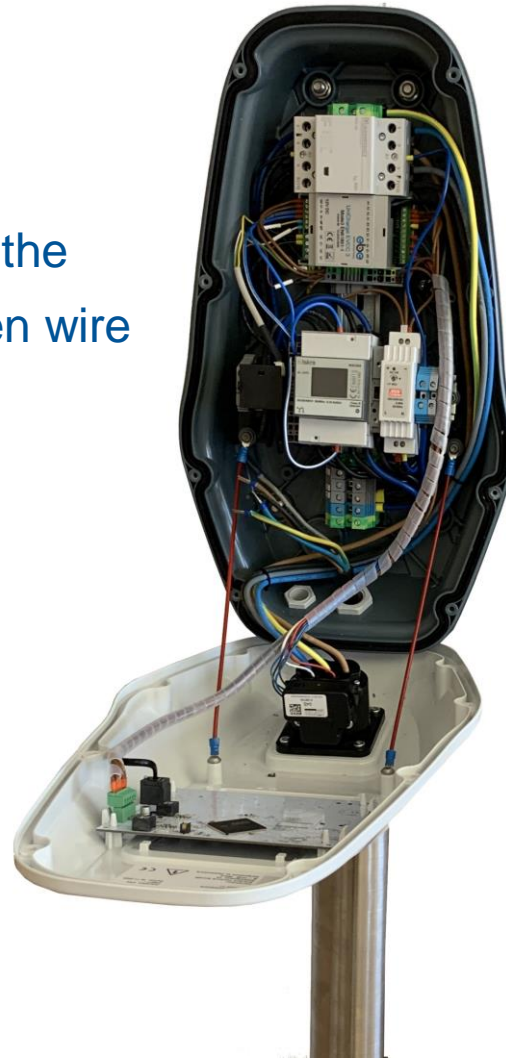
## INSTALLATION INSTRUCTION - ATTACH SEALING PLUGS

- To ensure electrical safety, attach the 4 sealing plugs included in the CION delivery to cover the bolt holes.



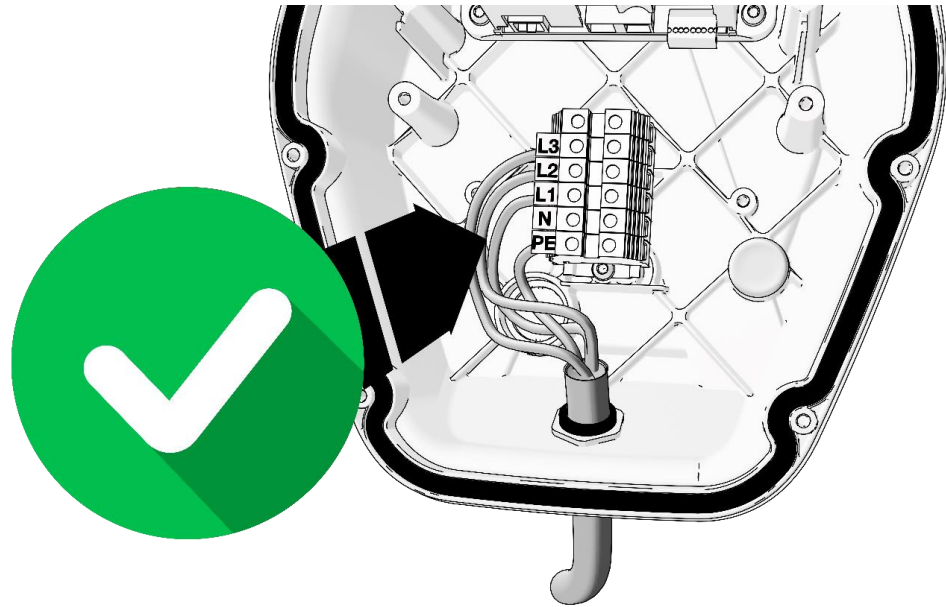
## INSTALLATION INSTRUCTION - SUPPLY LINE CONNECTION

- In this step, please make sure the CION is securely mounted, then wire the supply line correctly at the terminal block.

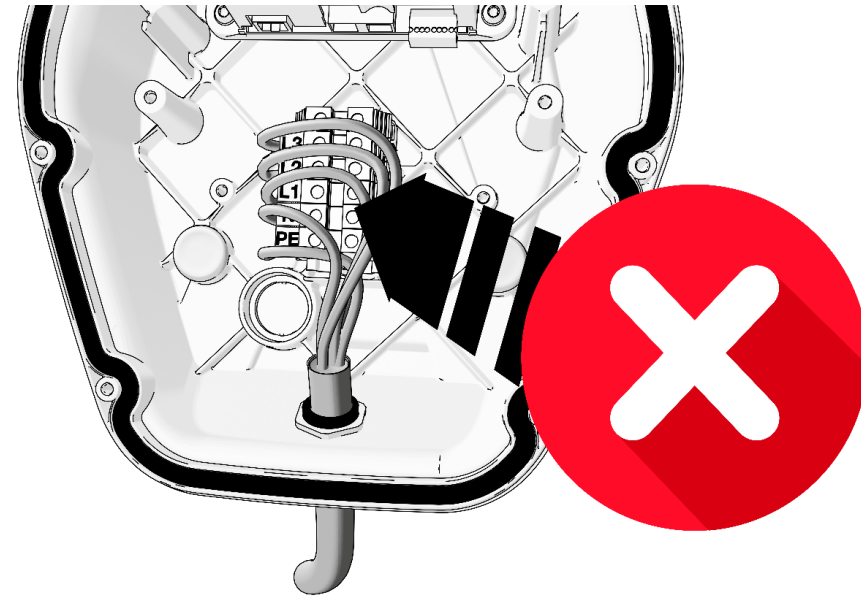


# INSTALLATION INSTRUCTION - CORRECT SUPPLY LINE WIRING

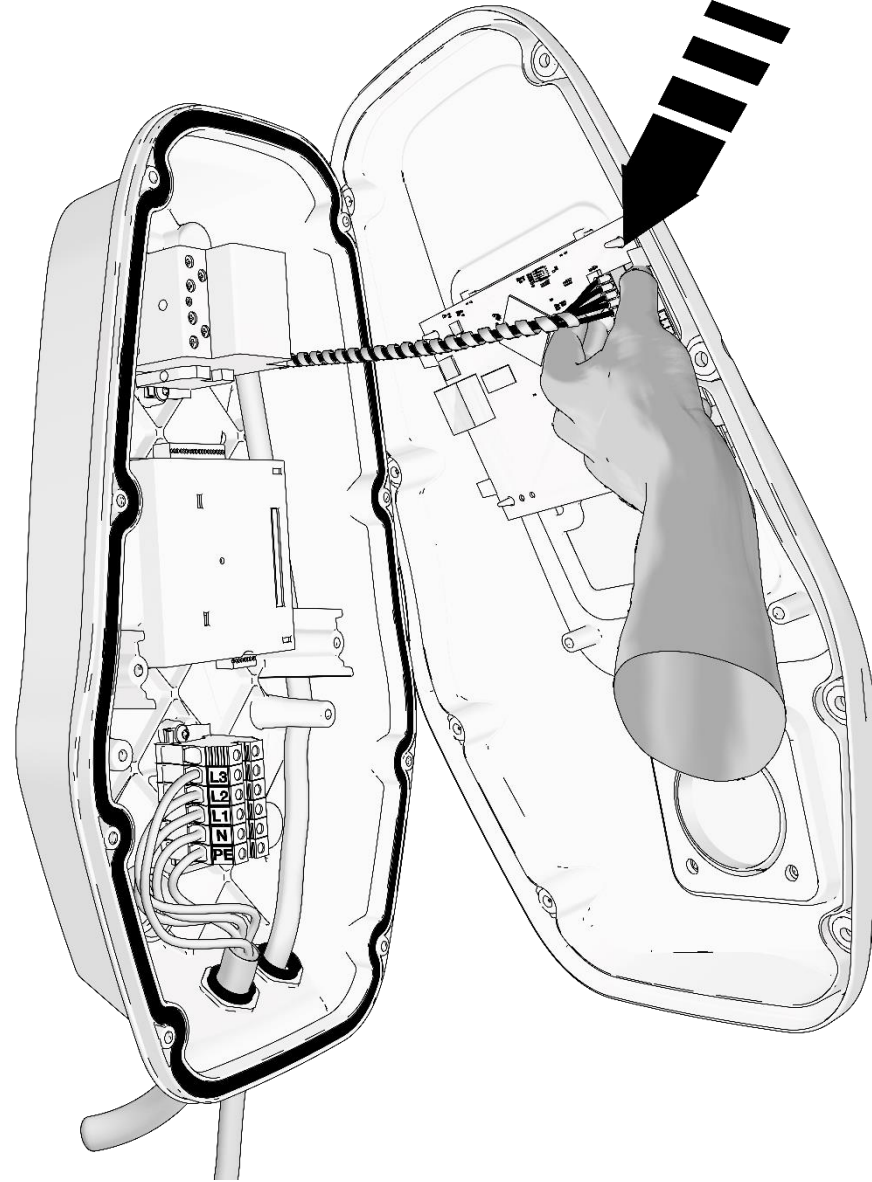
## CORRECT



## WRONG



## INSTALLATION INSTRUCTION - RFID/LED BOARD CONNECTION





## INSTALLATION INSTRUCTION - ATTACH COVER

- In the last step, make sure the cover is properly closed, then use the 8 plastic stainless steel screws included in the CION delivery to attach it with 3.0 Nm max. torque.

